

AI TearSheet KOREA

024910

Enter Stock Symbol (Ex. "106080" for Hysonic)

[KR \(₩\)](#) [IPO](#) [Research](#) [DART](#) [Daum Finance](#)

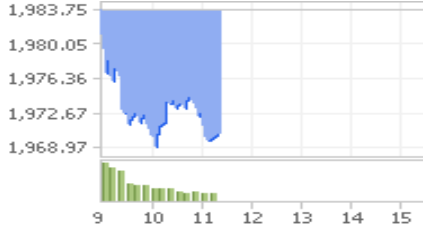
[Back to Azusa Investments](#)

[AITearSheet USA](#)

[AITearSheet Korea](#)

[Automated Excel Model](#)

KOSPI 1 Day



KOSPI 3 Year



KOSDAQ 3 Year



DOW 3 Year



HK HSI 3 Year



Gold 3 Year



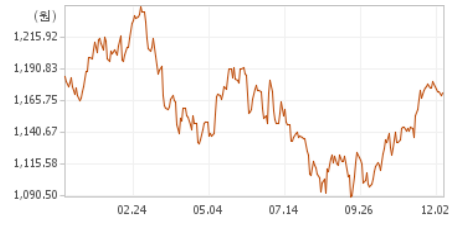
WTI 3 Year



PHLX Semi (SOX) 3 Year



USDKRW 1 Year



Market Data

BNO (Brent Crude)	14.44
USO (WTI Crude)	10.93
VIXX	12.9
USDKRW	1,176.75

Real-Time Top 20 Queries (Source: Daum Finance)

-4.87%	삼성바이오로직스	#N/A	+0.17%	삼성전자	005930	+29.91%	솔리드	050890	+0.44%	썬코어	051170
+6.18%	보성파워텍	006910	-3.93%	영진약품	003520	-3.66%	한국전력	015760	+8.35%	경창산업	024910
+2.00%	바이로메드	084990	-6.11%	현대상선	011200	-7.19%	고려산업	002140	-3.13%	한화테크윈	012450
-10.29%	엔씨소프트	036570	+23.81%	코디엠	224060	+2.80%	SK하이닉스	000660	+5.28%	현대중공업	009540
+6.39%	삼성중공업	010140	+1.67%	LG전자	066570	+14.88%	홈센타홀딩스	#N/A	+8.22%	한디소프트	#N/A

AI Buy List

COMPANY NAME	Posco	Cheryoung	Cheryoung	SK Hynix	Ssg SDI	Ssg ElecMe	KP Co	Sebang	Daechang	Korea Indu	KONA I
Business	Steel	Electricity	power supp	Semiconduc	Effin Batt	capacitors	Coal biz w	Harbor ste	Shafts cra	Livestock	Snartchip
Company Code	005490	147830	033100	000660	006400	009150	009810	004360	015230	002140	052400
Inception Date	2016-09-02	2016-09-09	2016-09-05	2016-09-09	2016-09-12	2016-09-12	2016-09-12	2016-10-13	2016-10-13	2016-10-26	2016-10-27
Inception Price	232,000	10,150	4,310	38,950	96,300	47,950	1485	15,600	44,200	3,800	12,300
Current Price	251,500	9,780	5,010	44,150	92,000	46,900	937	15,450	47,650	5,670	13,300
Change Since Inception	8.41%	-3.65%	16.24%	13.35%	-4.47%	-2.19%	-36.90%	-0.96%	7.81%	49.21%	8.13%
Price Target	600,000	Monitor	5,000	74,500	171,000	80,000	Monitor	34,400	105,000	4,400	21,000
Upside Potential	138.57%	N/A	-0.20%	68.74%	85.87%	70.58%	N/A	122.65%	120.36%	-22.40%	57.89%

COMPANY NAME	DSR										
Business	Steelwire										
Company Code	069730										
Inception Date	2016-11-01										
Inception Price	8,100										
Current Price	9,690										
Change Since Inception	19.63%	#DIV/0!	#DIV/0!	#DIV/0!	#DIV/0!	#DIV/0!	#DIV/0!	#DIV/0!	#DIV/0!	#DIV/0!	#DIV/0!
Price Target	14,000										
Upside Potential	44.48%	#DIV/0!	#DIV/0!	#DIV/0!	#DIV/0!	#DIV/0!	#DIV/0!	#DIV/0!	#DIV/0!	#DIV/0!	#DIV/0!

개요 *경차산업* 동사는 AUTO 트랜스미션부품, CABLE류, 페달류, AUTO LEVER류, 리저브탱크류 등의 자동차부품제조사업 및 2013년 하반기부터 태양광 발전사업을 영위하고 있음 주요 품목인 CONTROL 케이블 류에 있어서는 (주)인팩과 함께 현대자동차에 승용차, 중소형버스, 3톤 이하 트럭 소요물량의 50%를 납품하고 있음 리저브탱크는 소요물량의 100%를 현대자동차, 현대모비스, 쌍용자동차, 대우자동차 등 전 차종에 납품하고 있음 2013년 하반기부터 일부 생산 가동된 태양광 발전사업은 아직 미미한 상태이며, 2014년 상반기 정상 가동되면서 연간 8억 원 정도의 매출이 발생할 것으로 예상 매출구성은 AUTO T/M부품 81.76%, CABLE 6.54%, LEVER 4.84%, PEDAL 4.20%, 기타 2.22%, 리저브탱크 0.43% 등으로 구성

Loading...

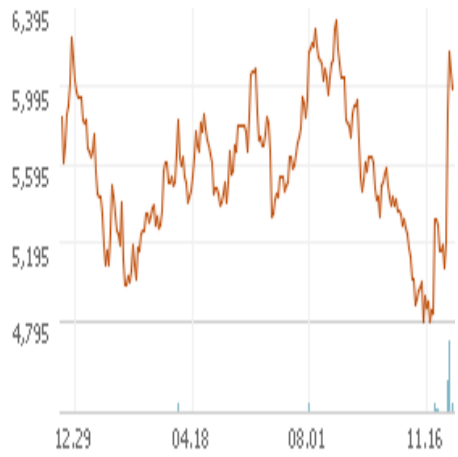
Company Name	경차산업	Current Price	\$6.05	P/R	0.21
Company Name	경차산업	Previous Close	\$6.19	P/B	1.02
Stock Code	024910	% Change	-2.26%	ROE (%)	5.20%
Industry	#N/A	Shares Outstanding (MM)	17.65	YoY Growth	-1.42%
Website	#N/A	Market Cap (MM)	\$106.8	Dividend Yield	1.14%
CEO	Son Ki-Chang Honorary Chairman	Net Cash	-\$136.5	Debt/Equity	134.39%
INCOME STATEMENT					
	-----2011-----	-----2012-----	-----2013-----	-----2014-----	-----2015-----
REVENUE	340.7	402.1	499.1	520.9	513.6
cogs	316.3	370.2	447.1	467.0	467.0
GROSS MARGIN	24.4	31.8	52.0	53.9	46.6
sg&a	19.9	22.6	27.5	31.3	36.3
EBIT	4.5	9.2	24.5	22.7	10.3
interest	11.3	13.3	10.4	10.3	9.5
tax	1.0	0.4	1.5	1.1	3.5
NET INCOME	4.3	9.4	23.1	21.2	5.5
BALANCE SHEET					
	-----2011-----	-----2012-----	-----2013-----	-----2014-----	-----2015-----
cash	1.5	13.9	6.7	4.3	4.8
current asset	119.8	122.9	121.8	144.0	123.7
stock investments	2.5	2.2	0.9	3.4	7.9

long term asset	248.6	255.2	292.2	305.9	338.2
TOTAL ASSET	368.4	378.1	414.0	449.9	461.9
current liability	219.0	161.5	204.3	243.7	215.3
long term liability	85.5	139.6	121.6	101.5	141.4
TOTAL LIABILITY	304.5	301.2	325.9	345.3	356.7
retained earnings	27.9	35.4	56.9	73.5	72.9
paid in capital	7.8	8.8	8.8	8.8	8.8
additional paid in capital	15.2	19.7	19.7	19.7	19.7
SHAREHOLDER EQUITY	64.0	77.0	88.1	104.7	105.2
CASHFLOW STATEMENT	-----2011-----	-----2012-----	-----2013-----	-----2014-----	-----2015-----
			--	--	--
net income	4.3	9.4	23.1	21.2	5.5
depreciation	49.0	43.0	42.1	48.9	46.0
amortization	0.2	0.3	0.3	0.4	0.5
OPERATING FLOW	32.9	74.5	105.1	69.5	62.7
land/property	-80.7	0.0	0.0	0.0	0.0
machine/equipment	-7.8	-47.6	-78.6	-65.2	-40.9
research	0.0	0.0	0.0	0.0	0.0
INVESTING FLOW	-77.0	-48.9	-80.4	-91.2	-59.8
share issuance	0.0	0.0	0.0	0.0	0.0
long term loan	45.0	28.0	-13.1	31.0	8.4
dividend	1.1	0.8	1.0	1.5	1.2
FINANCING FLOW	41.7	-13.2	-31.9	19.4	-2.4
CHANGE IN FLOW	-2.5	12.4	-7.2	-2.4	0.6
Beginning Cash	4.0	1.5	13.9	6.7	4.3
Ending Cash	1.5	13.9	6.7	4.3	4.8
Book Value (Downside Protection)	105.19	Downside/Market Cap	98.49%	Value/Share	\$23.17
Op Cash Flow (Coupon for 5 Years)	303.78	Coupon/Market Cap	144.66%	Price/Share	\$6.05
Total Value	408.97	Total Value/Market Cap	243.16%	Buy/Sell?	Buy

3 Year Chart

1 Year Chart

3 Month Chart



TOP SHAREHOLDERS

DETAIL OF TOP 5 OWNERS				
COMPANY CODE	SHAREHOLDERS	# SHARES	% OWNERSHIP	DOLLAR VALUE
	손일호 외 13명	6,806,324	38.76%	\$41,178,260
	자사주보유	2,277,400	12.97%	\$13,778,270
	-	-	-	-
	-	-	-	-
	-	-	-	-
DETAIL OF TOP OWNER				
COMPANY CODE	SHAREHOLDERS	# SHARES	% OWNERSHIP	DOLLAR VALUE
	손일호	3,225,256	18.37%	\$19,512,799
	손기창	798,703	4.55%	\$4,832,153
	손영해	526,740	3.00%	\$3,186,777
	손덕수	471,717	2.69%	\$2,853,888
	(주)대경A/S	370,000	2.11%	\$2,238,500
	손명희	365,272	2.08%	\$2,209,896
	손태훈	305,000	1.74%	\$1,845,250
	경창정공(주)	223,302	1.27%	\$1,350,977
	박의경	203,496	1.16%	\$1,231,151